

Broadcast ENG/EFP, Pro Video Lens Optical Accessories

Adaptor Type Converters/Attachments

CATEGORY	MODEL	CJ45e×13.6B CJ45e×9.7B	CJ15e×4.3B CJ12e×4.3B CJ14e×4.3B CJ18e×8.5BB CJ18e×28B KJ10e×4.5B HJ40e×14B HJ40e×10B HJ21e×7.5B	HJ17e×6.2B KJ13×6B	CJ15e×8.5B	CJ25e×7.6B CJ20e×7.8B CJ24e×7.5B KJ22e×7.6B	CJ18e×7.6B KJ20×8.2B KT17e×4.3B KJ17e×7.7B KH20×6.4
TELESIDE CONVERTER *1	T15HG					●	●
WIDE CONVERTER *1	W80HG					●	●
WIDE ATTACHMENT *1	WA75HG					●	●
FISHEYE ATTACHMENT *1	FEA60HG					●	●
ADAPTER RING	ACC-85 III						●
	ACC-98 II				*2	●	*2
CLOSE-UP LENS	82CL-UP800H				● *2		● *2
	82CL-UP1300H				●		●
	105CL-UP800HG					●	
UV FILTER	UV / 82				●		●
	UV / 94					●	
	UV / 105			●		●	
	UV / 127		●				
	UV / 127-H	●	●				
CLEAR FILTER	CL/127MM		●				
	CL/127MM-H	●	●				
POLARIZATION FILTER	PL / 82				●		●
	PL / 105			●		●	
	PL / 127		●				

*1: An adapter ring is necessary to attach it to the lens. *2: Close-up lens supported for SD.



• The number of each filter type name, indicates the screw diameter. Screw pitch: screw diameter 82 mm = 0.75 mm, thread diameter 127 mm = 0.75 mm, thread diameter other than the left = 1.00 mm

The following items have been discontinued: W80H Wide Converter.

The following lenses have been discontinued: HJ18e×28B, HJ24e×7.5B, HJ18e×7.6B, HJ14e×4.3B, KH13×4.5B

Mount Converters for Different Image Format Size Cameras

Canon offers a variety of Mount Converters to be used between a lens and a camera of different image format sizes. Each converter will extend the effective Angular Field of View of the associated lens according to the Shift Ratio listed below.

	Converter	Image Size Conversion			Electronic Conversion
		Lens *4	Camera	Shift Ratio to Telephoto Side	
	LO-32BMT	2/3" B4 Mount	1/2" Sony *5	Approx. 1.4x	N/A
	LCV-40B	2/3" B4 Mount	1/2 Standard Mount *6	Approx. 1.4x	N/A
	LCV-42T	2/3" B4 Mount	1/3" Standard Mount	Approx. 1.8x	N/A
	LCV-41E	2/3" B4 Mount	Sony PMW-EX3	Approx. 1.4x	Lens Cable (12 pin) EX3 Hot Shoe (14 pin)

*4: The converters are to be used with lenses weighing less than 4.4 lbs (2.0kg). *5: Sony's Hot Shoe mount camera, excluding PMW-EX3.

*6: 1/2" Camera of standard type mount (Panasonic, JVC, Grass Valley).

Broadcast ENG/EFP, Pro Video Lens Optical Accessories

Converter/Attachments

TELE-SIDE CONVERTER



- The use of the telephoto converter would shift the focal length of a lens with a factor of 1.5x.
- F No. of the original lens is not affected.
- Only the telephoto side of the lens can be used. The picture corners are eclipsed at wide angle.
- The minimum object distance becomes 2.25x that of the original lens.

CHANGE IN FOCAL LENGTH

Model	M.O.D.	Eclipse Point
CJ24ex7.5B	1.8m	f:100mm
KJ17ex7.7B	1.35m	f:60mm

WIDE CONVERTER



- The wide converter W80/W80Y-85 would shift the focal length of a lens with a factor of 0.8x.
- F No. of the original lens is not affected.
- The minimum object distance becomes 0.64x with the W80/W80Y-85.

CHANGE IN FOCAL LENGTH

Model	Master Lens	With Wide Converter
CJ24ex7.5B	7.5-180mm	6.0-144mm
KJ17ex7.7B	7.7-131mm	6.2-104.8mm

FISH-EYE ATTACHMENT



- The zoom lens becomes a fish-eye fixed focal length lens (distorted image) with the fish-eye attachment.
- The use of a fish-eye attachment would shift the focal length of a lens with a factor of 0.6x.
- Focus is adjusted by use of the macro lever.

CHANGE IN FOCAL LENGTH

Model	Master Lens	With Fish-Eye Attachment
CJ24ex7.5B	7.5-180mm	4.5mm
KJ17ex7.7B	7.7-131mm	4.6mm

WIDE ATTACHMENT



- The zoom lens becomes a wider fixed focal length lens with the wide attachment.
- The use of the wide attachment would shift the focal length of a lens with a factor of 0.75x.
- Focus is adjusted by use of the macro lever.

CHANGE IN FOCAL LENGTH

Model	Master Lens	With Wide Attachment
CJ24ex7.5B	7.5-180mm	5.6mm
KJ17ex7.7B	7.7-131mm	5.8mm

POLARIZED LIGHT FILTER



- Used to intercept light reflected from the surface of water or glass.
- The polarizer is threaded on to a lens hood.

Extenders



- The X2.0-B4 extender mounts in between a camera and lens to magnify an image.
- The extender doubles the focal length of the master lens and doubles the F-number.

Model	Applicable Lenses
X2.0-B4	Applicable to all B4 type mount Canon 2/3" lenses.

Broadcast ENG/EFP, Pro Video Lens Optical Accessories

Close-Up Lenses



- A close-up lens is used to shorten the M.O.D.* of the master lens for close-up shooting.
- The maximum object distance becomes the focal length of the close-up lens.
- The minimum object distance is calculated by the following formula:

$$\text{New minimum object distance} = \text{fc} \times \text{S} / (\text{fc} + \text{S})$$

fc = Focal length of the close-up lens

S = M.O.D.* of the master lens

Imaging range for KJ17ex7.7B with close-up lenses

KJ17ex7.7B (16:9)	82CL-UP800H				82CL-UP1300H			
	Tele end : 131mm		Wide end : 7.7mm		Tele end : 131mm		Wide end : 7.7mm	
	Focusing Scale (mm)	∞	0.6	∞	0.6	∞	0.6	∞
Object Distance (mm)	800	343	800	343	1300	411	1300	411
Object Dimensions (mm)	58x33	24x14	989x556	376x212	95x53	29x16	1634x919	455x256

Model	Applicable Lenses
82CL-UP800H ^{*1}	HJ18ex7.6B, HJ15ex8.5B, KJ17ex7.7B, KJ20x8.2B, KH20x6.4, KT17ex4.3B, KT20x5
82CL-UP1300H ^{*1}	HJ18ex7.6B, HJ15ex8.5B, KJ17ex7.7B, KJ20x8.2B, KH20x6.4, KT17ex4.3B, KT20x5
105CL-UP900H ^{*1}	HJ24ex7.5B, KJ22ex7.6B
105CL-UP800HG	CJ20ex7.8B, CJ24ex7.5B, HJ24ex7.5B, KJ22ex7.6B

*M.O.D. = Minimum Object Distance.

* 1: Not recommended for 4K shooting.

Broadcast ENG/EFP, Pro Video Lens Accessories

Compatible Zoom/Focus Control List

OPERATION	CATEGORY	MODEL	CJ45ex13.6B CJ45ex9.7B HJ40ex14B HJ40ex10B	CJ25ex7.6B CJ24ex7.5B CJ20ex7.8B CJ18ex28B CJ18ex7.6B CJ15ex8.5B CJ15ex4.3B	CJ14ex4.3B CJ12ex4.3B HJ21ex7.5B HJ17ex6.2B KJ22ex7.6B KJ17ex7.7B KJ10ex4.5B KT17ex4.3B	KJ20x8.2B KJ13x6B KH20x6.4
FOCUS	FOCUS DEMAND	FPD-400D	●		●	● ^{*1}
	DRIVE UNIT	FPM-77				●
		FPM-420D			● (IRS,KRS)	
	FLEX CONTROLLER	FFC-200	● ^{*3}		● ^{*2}	●
		FFC-15				●
	FLEXIBLE CABLE (32 INCHES)	FC-40	● ^{*3}		● ^{*2}	●
	OUTLET	FFM-100			● ^{*2}	
FM-12					●	
FFM-300			● ^{*3}			
ZOOM	ZOOM DEMAND	ZSD-300D	●		●	● ^{*1}
	PROVIDED ZOOM	ZSD-15MII				●
	SERVO GRIP	ZSG-200M	● ^{*1}		● ^{*1}	●

* 1: A unit that can be attached using a conversion cable.

* 2: Please be aware use of these controllers will result in a lower image quality MTF.

* 3: These accessories are not recommended for use with CJ45ex9.7B and CJ45ex13.6B.

Broadcast ENG/EFP, Pro Video Lens Optical Accessories

Focus Controller



Zoom Controller



■ Conversion Cable is Necessary When Using with the Following Combinations

Model Name	Applicable Lens	Adapter Cable	Lens Side Pin#	Control Side Pin#
FPM-420D	Analog Drive Lens	CC-1220	12	20
FPD-400D		CC-0620	6	20
ZSD-300D		CC-0820	8	20

Control Accessories for Digital Drive ENG/EFP Lenses

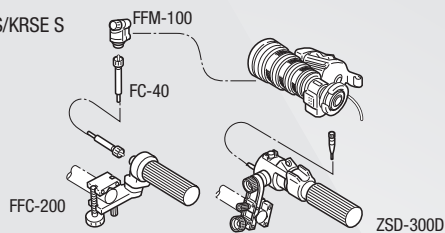
CJ45ex13.6B / CJ45ex9.7B / CJ25ex7.6B / CJ20ex7.8B / CJ12ex4.3B / CJ18ex28B / CJ15ex8.5B / CJ24ex7.5B / CJ18ex7.6B / CJ14ex4.3B / HJ40ex14B / HJ40ex10B / HJ21ex7.5B / HJ17ex6.2B / KJ22ex7.6B / KJ17ex7.7B / KJ10ex7.5B / KT17ex4.3B

■ Recommended Kit Configurations

MS-210D

for all listed
IASE S/IRSE S/KRSE S
Lenses

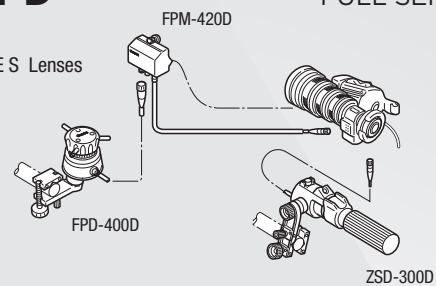
SEMI-SERVO KIT



SS-41-D

for all listed
IRSE S/KRSE S Lenses

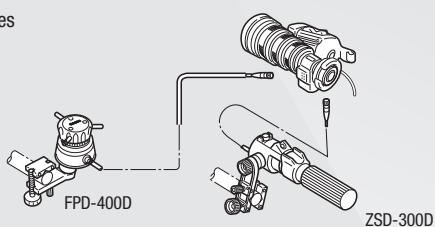
FULL SERVO KIT



SS-41-IASD

for all listed
IASE S Lenses

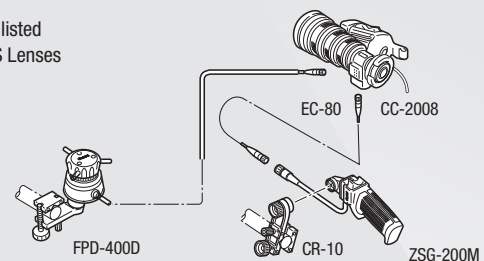
FULL SERVO KIT



SS-42-IAS

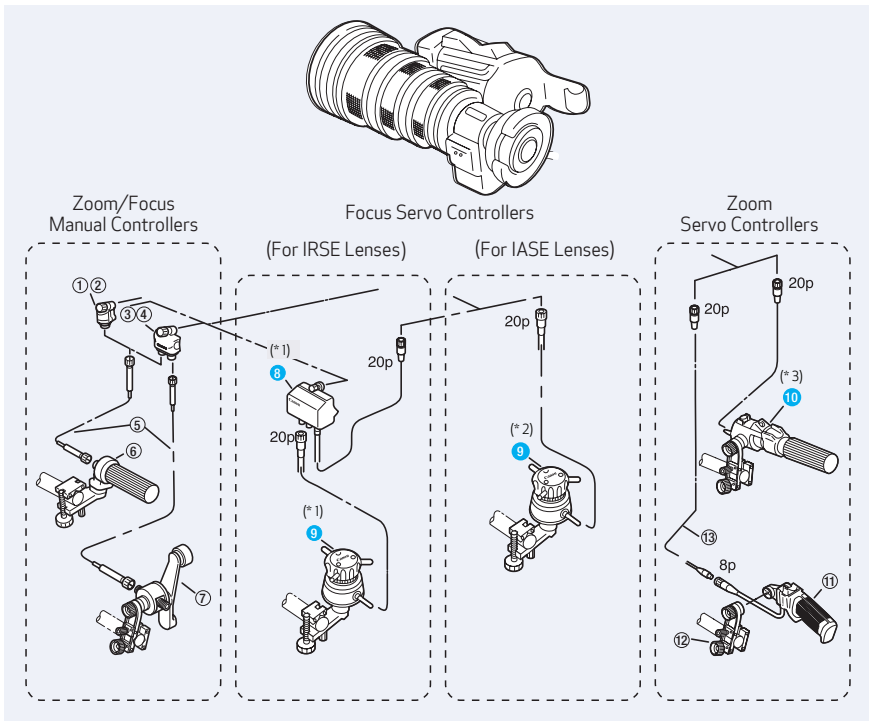
for all listed
IASE S Lenses

FULL SERVO KIT



DIGITAL Control Accessories of Digital Drive ENG/EFP Lenses

Applicable Component Detail



#	UNIT	DESCRIPTION
①	FFM-100	Flex Focus Module
②	FFM-300	Flex Focus Module
③	FFM-200*1	Flex Dual Module
④	FFM-400*1,2	Flex Dual Module
⑤	FC-40	Flex Cable
⑥	FFC-200	Flex Focus Controller
⑦	FZC-100*1	Flex Zoom Controller
⑧	FPM-420D*1	Focus Positional Servo Module
⑨	FPD-400D*1	Focus Positional Demand
⑩	ZSD-300D*1	Zoom Demand
⑪	ZSG-200M	Zoom Servo Grip
⑫	CR-10	Clamper
⑬	CC-2008	20p-8p Cable

*1: FZC-100, FFM-200, FFM-400, FPD-400, FPM-420 and ZSD-300A/M are discontinued.

*2: Analog FPD-400 is also applicable, however, CC-2006 conversion cable is necessary to connect between IASD/IASE Digital Drive Lens and FPD-400.

*3: Analog ZSD-300A/M is also applicable but CC-2008 is needed to connect between IASE S digital drive lens and ZSD-300A/M.

● The controllers support the new DD functions.

Applicable Kit Detail

For IRSE S Type Lenses

	Kit Name	Zoom		Focus	
		System	Component	System	Component
Zoom Servo Only	(ZR-1D)	ZR-1D	20	—	—
	—	ZR-2(A)	21, 22, 28	—	—
Semi-Servo	MS-210D	ZR-1D	20	FR-2	2, 8, 10
	MS-220	ZR-2(A)	21, 22, 28	FR-2	2, 8, 10
Full Servo	SS-41-D	ZR-1D	20	FPS-4D	13, 17
Full Manual	—	FZC-1	6, 8, 11	FR-2 (w/o 2)	8, 10

For IASE S Type Lenses (Except HJ40ex, CJ45ex)

	Kit Name	Zoom		Focus	
		System	Component	System	Component
Zoom Servo Only	(ZR-1D)	ZR-1D	20	—	—
	—	ZR-2(A)	21, 22, 28	—	—
Semi-Servo	MS-210D	ZR-1D	20	FR-2	2, 8, 10
	MS-220	ZR-2(A)	21, 22, 28	FR-2	2, 8, 10
Full Servo	SS-41-IASD	ZR-1D	20	FPS-4D	17
	SS-42-IASD	ZR-2(A)	21, 22, 28	FPS-4D	17
Full Manual	—	FZC-1	6, 8, 11	FR-2 (w/o 2)	8, 10

For CJ45ex13.6B, CJ45ex9.7B, HJ40ex14B and HJ40ex10B

	Kit Name	Zoom		Focus	
		System	Component	System	Component
Zoom Servo Only	—	ZR-1D	20	—	—
	—	ZR-2(A)	21, 22, 28	—	—
Semi-Servo	—	ZR-1D	20	FR-2	3, 8, 10
	—	ZR-2(A)	21, 22, 28	FR-2	3, 8, 10
Full Servo	SS-41-IASD	ZR-1D	20	FPS-4D	17
	SS-42-IASD	ZR-2(A)	21, 22, 28	FPS-4D	17
Full Manual	—	FZC-1	6, 8, 11	FR-2 (w/o 2)	8, 10

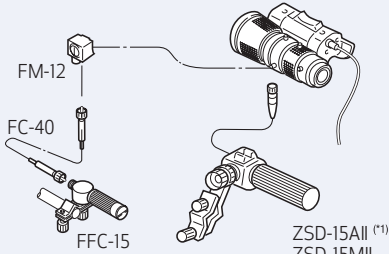
Recommended kit configuration.

ANALOG Control Accessories for Analog Drive HDgc Lenses

Recommended Kit Configuration

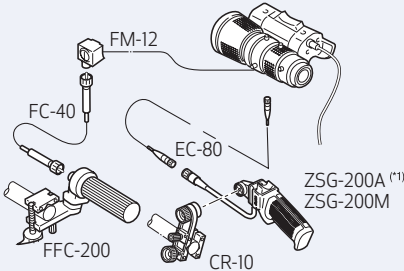
MS-15 SEMI-SERVO KIT

for all Pro-video ENG lenses



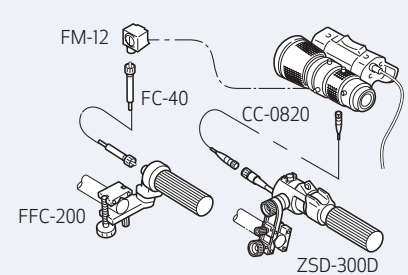
MS-22 SEMI-SERVO KIT

for all Pro-video ENG lenses



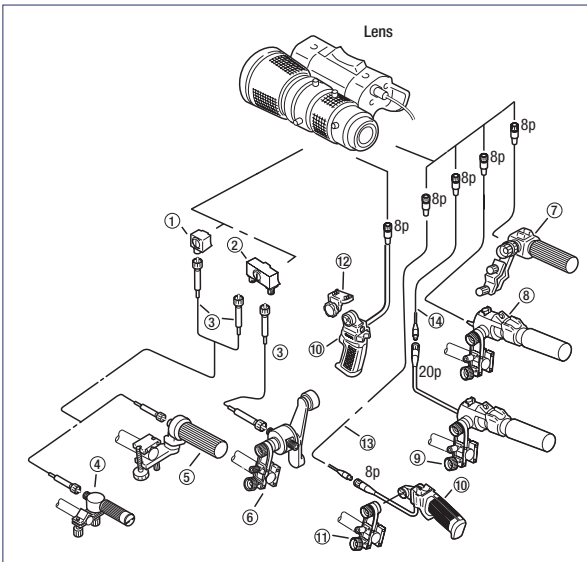
MS-21D SEMI-SERVO KIT

for all Pro-video ENG lenses



*1: "A" or "M" type demands depend upon camera. Type "A" demands are no longer available from Canon.

Applicable Component Detail



#	UNIT	DESCRIPTION
①	FM-12	Flex Focus Module
②	FM-70*	Flex Dual Module
③	FC-40	Flex Cable
④	FFC-15	Flex Focus Controller
⑤	FFC-200	Flex Focus Controller
⑥	FZC-100*	Flex Zoom Controller
⑦	ZSD-15A II / M II Zoom Demand ² (A or M types, depends on applicable camera)	A M
⑧	ZSD-300A/M Zoom Demand ² (A or M types, depends on applicable camera)	A M
⑨	ZSD-300D	Zoom Demand
⑩	ZSG-200A/M Zoom Servo Grip ² (A or M types, depends on applicable camera)	A M
⑪	CR-10	Clamper
⑫	GA-70*	Grip Adapter
⑬	EC-80	Zoom Extension Cable (8P)
⑭	CC-0820	Conv. Cable (8pM-20pF)

*FM-70, FZC-100, and GA-70 are discontinued.

*2: ZSD-15A II, ZSD-300A/M, ZSG-200A, and FPD-400 are no longer available from Canon stock.

Applicable Kit Detail

	Kit Name	Zoom		Focus	
		System	Component	System	Component
Zoom Servo Only	—	ZSD-15	16	—	—
	—	ZR-1	17	—	—
	—	ZR-2(A)	19, 20, 26	—	—
	—	ZR-2(B)	19, 21*	—	—
Semi-Servo	MS-15	ZSD-15	16**	FRC-15	1, 8, 9**
	MS-21	ZR-1	17	FR-2	1, 8, 10
	MS-21D	ZR-1D	18, 28	FR-2	1, 8, 10
	MS-22	ZR-2(A)	19, 20, 26	FR-2	1, 8, 10
Full Manual	FZC-1	FZC-1	5*, 8, 11	FR-2(w/o 1)	8, 10

* ② & ⑫ are not applicable to YH14x7.3 and YH16x7.

**In USA, ⑦ and ④ are available only as MS-15 kit configuration and not as individual products.

 Recommended kit configuration.